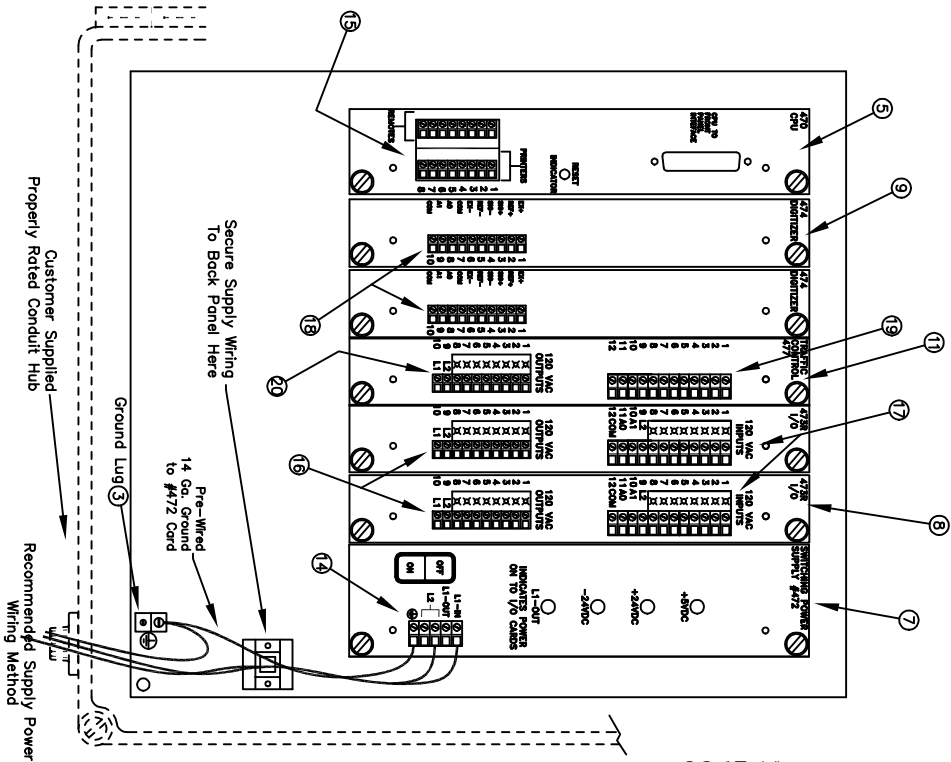


ITEM	QUAN	PART # / DESCRIPTION
1	1	Hoffman A-1614CHSCFG MAX Enclosure
2	1	TSC Keyboard Overlay, Model 10-400
3	1	Grounding Lug, Model 4460-4-400
4	1	#200-048 CPU to #476 Ribbon Cable
5	1	#470 CPU Card (Specify program)
6	1	#471 Busboard
7	1	#472 Switching Power Supply Card
8	1	#473 120 VAC Input/Output Card
9	1	#474 Load Cell Digitizer Card
10	1	#476 Keyboard-Display Interface Board
11	1	#477 Traffic Control Card
12	1	#200-0243 LCD Display Module
13	1	
14	1	#200-104 5 Pin Plug for #472 Card
15	2	#200-103 8 Pin Plug for #470 Card
16	1	#200-105 10 Pin Plug for #473 Card Outputs
17	1	#200-106 12 Pin Plug for #473 Card Inputs
18	1	#200-110 10 Pin Plug for #474 Card
19	1	#200-112 12 Pin Plug for #477 Card
20	1	#200-111 10 Pin Plug for #477 Card

Single Controller Contains 1 each: #470, #471, #472, #473, and #474. Dual Controllers Contain an additional #473 and #474. Traffic Control Card is An Optional device

Controller Back Panel & Card Cage Detail



**WARNING:** This Equipment Is To Be Installed And Serviced By Qualified Service Personnel ONLY

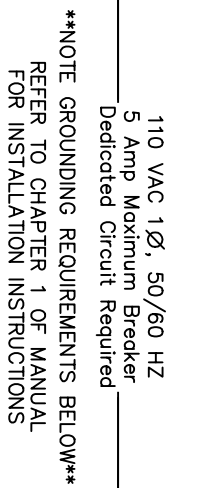
Read Instruction Manual CAREFULLY Before Attempting to Install This Equipment.

Front & Back Panel Details			
4693 Filler Controller			
Typical		DATE	1/08
		SCALE	AV
		BY	Second
		REV	Updated for Option Display
		NO	BY DATE
		REVISION	

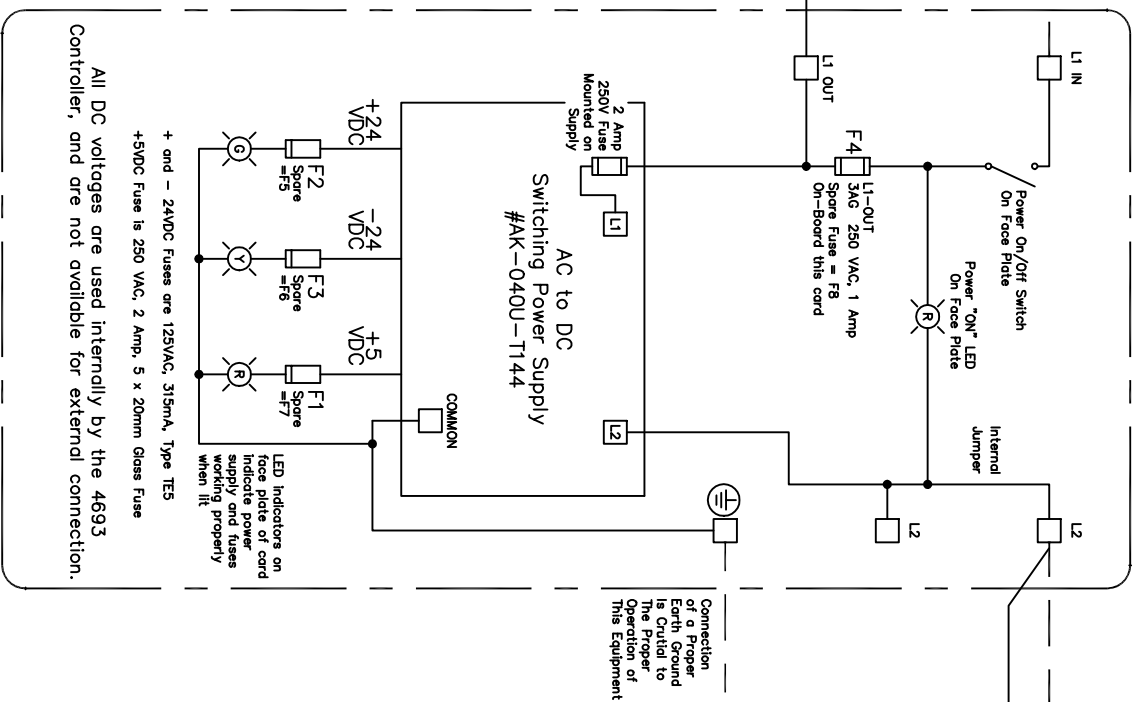
TSC

4693-E1

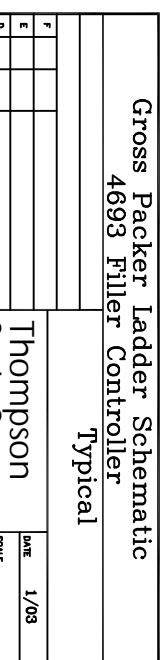
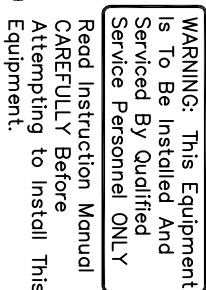
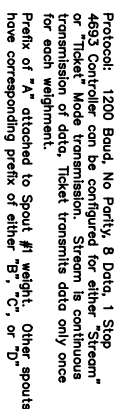
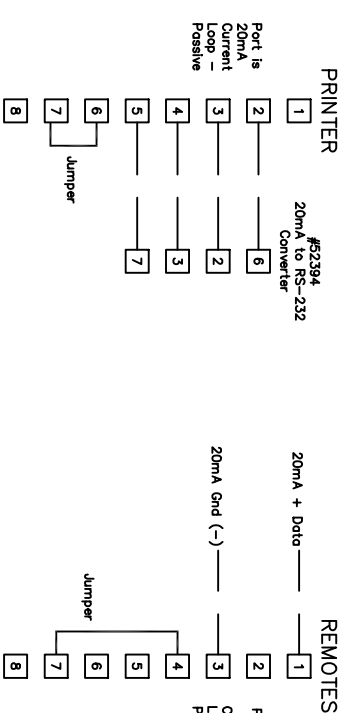
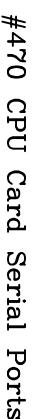
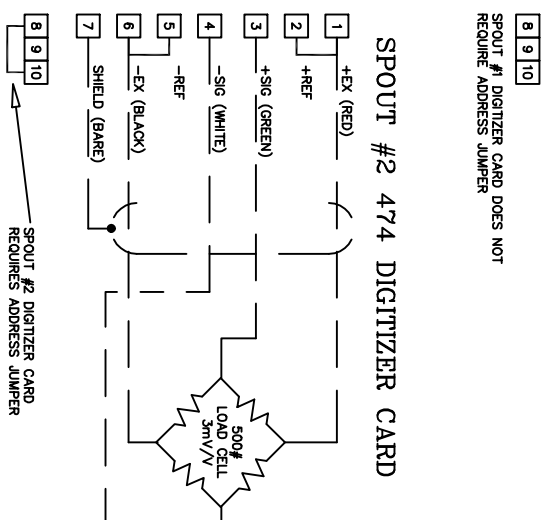
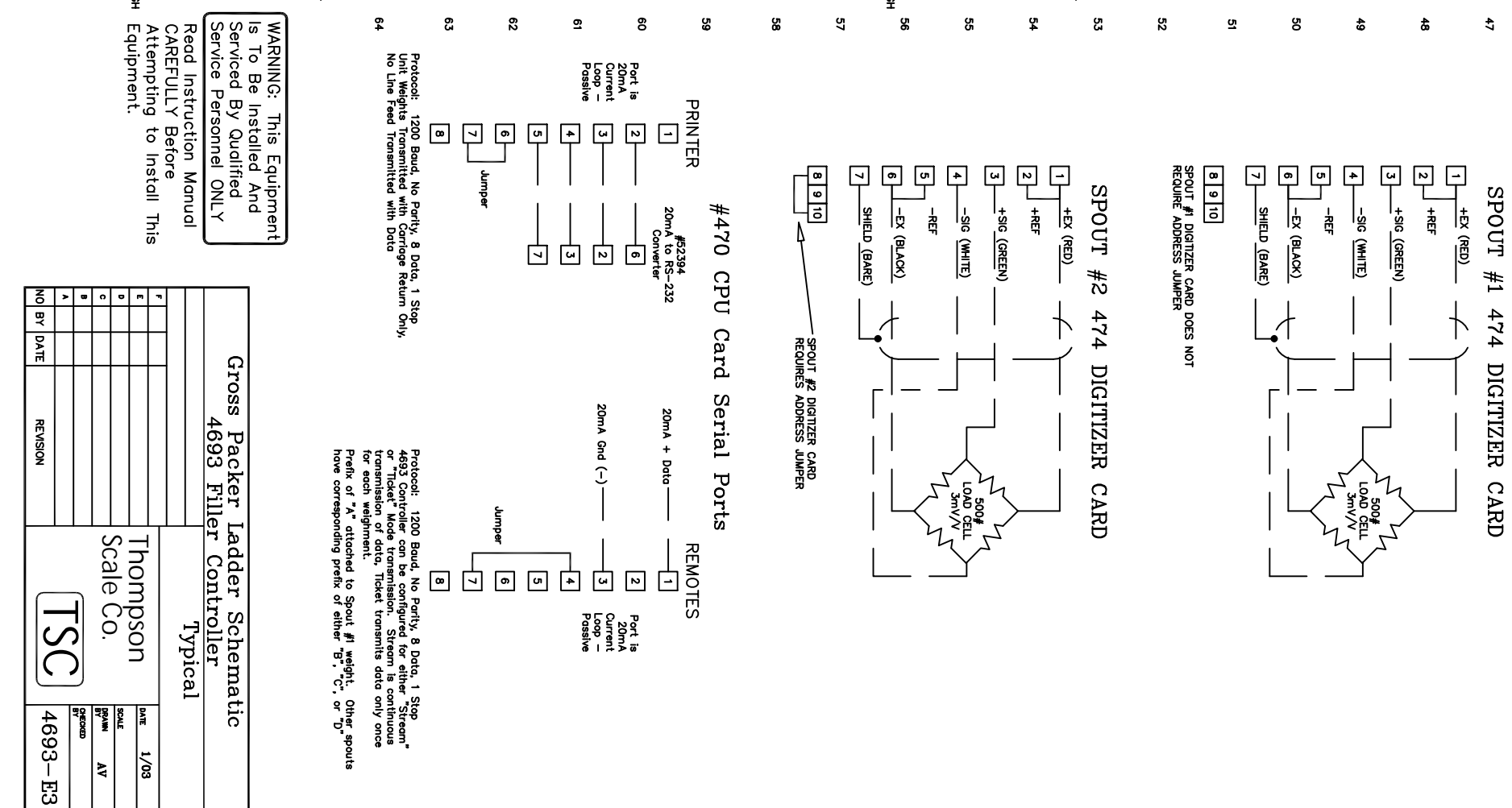
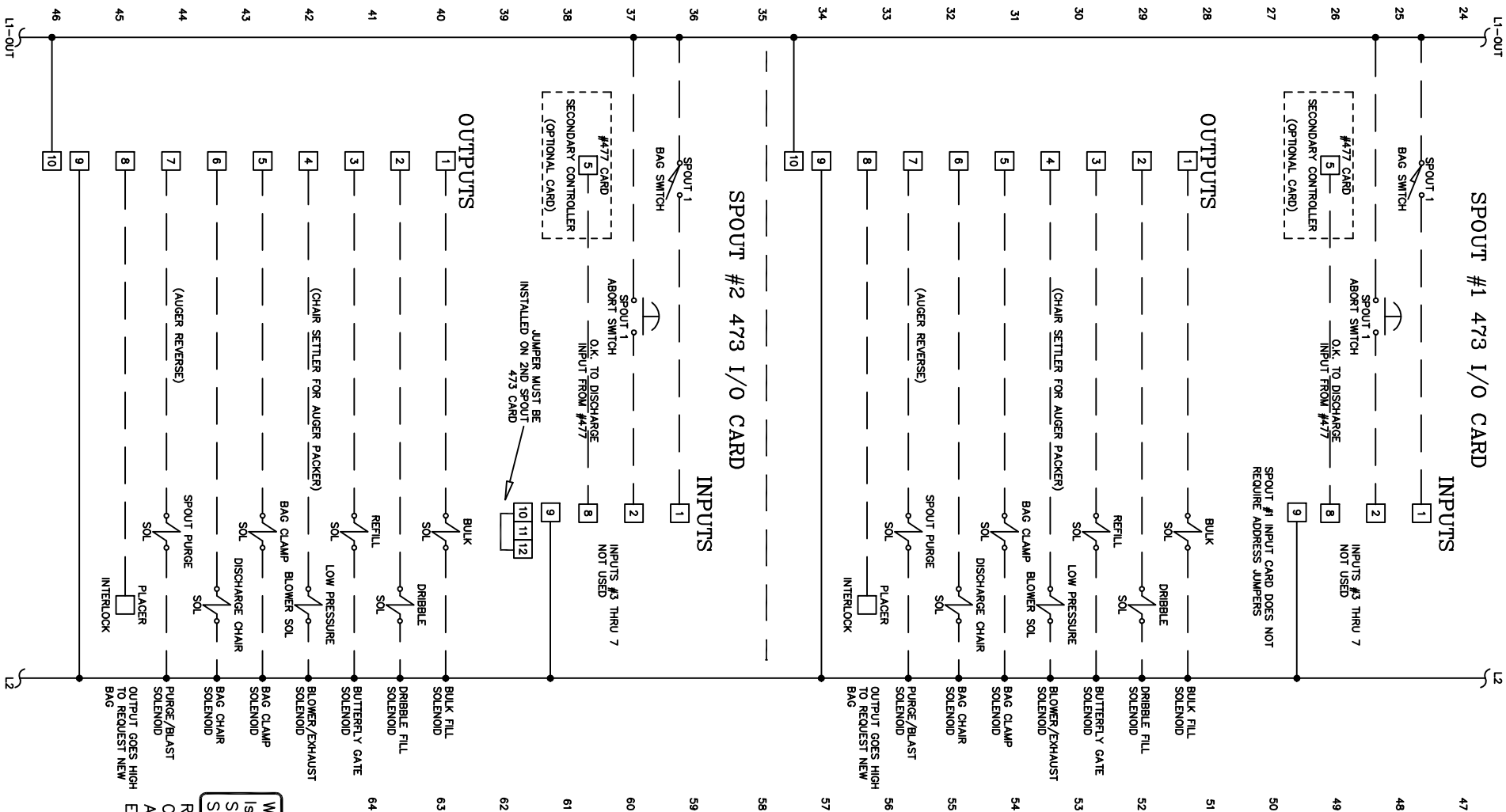
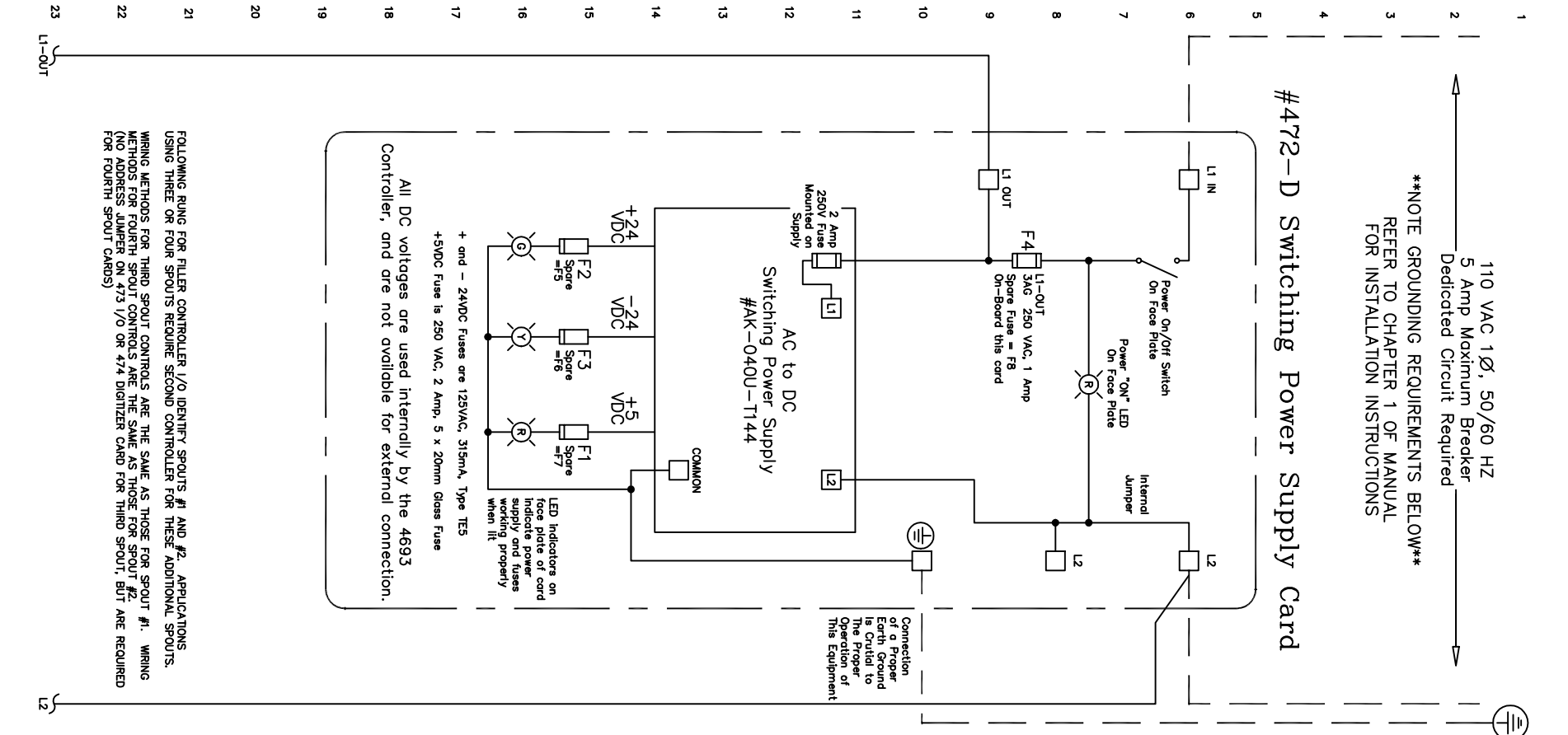




## #472-D Switching Power Supply Card




All DC voltages are used internally by the 4693 Controller, and are not available for external connection.



F				DATE	1/03
E				SOLD	
D				BYPN	AY
C				BY	
B				ORDERED BY	
A					
NO	BY	DATE	REVISION		


Thompson  
Scale Co.



4693-E3

F				DATE	1/03
E				SOLD	
D				BYPN	AY
C				BY	
B				ORDERED BY	
A					
NO	BY DATE	REVISION			

Thompson  
Scale Co.



4693-E3

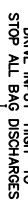
ii

DISCHARGE SYSTEMS.

FAR RIGHT SPOUTS.

## THE TAKE-AWAY CONVEYOR.

**CONTROLLER MUST OPERATE THE FAR LEFT AND CENTER SPOUTS.**



## CONTROL TIMING CHART



# IL

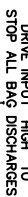
## DISCHARGE SYSTEMS:

## FAR LEFT SPOUTS

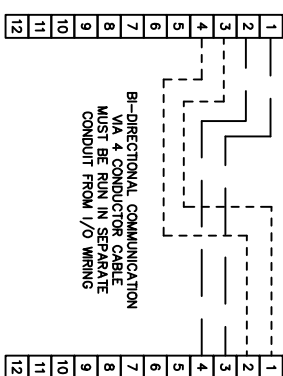
TSC DEFINES SPOUT #1 AS THE 2ND FROM THE RIGHT


SPOUT #1 IS ALWAYS THE LEFT SPOUT WHEN USING A DUAL CONTROLLER

CONTROLLER MUST OPERATE THE FAR RIGHT AND CENTER SPOUTS



## CONTROL TIMING CHART



Traffic Control Interconnection Diagram			
4693 Filler Controller			
		Typical	
F		<div>Thompson Scale Co.</div> <div>  </div>	
E			
D			
C			
B			
A	M.S. 1/2003	CONNECTED TAPER RESERVATIONS	
NO	BY DATE	REVISION	
		DATE	1/03
		SCALE	
		GRAPH	AV
		CHECKED	
		BY	
		4693-E	